



**CANCER+**  
**CAREERS**

---

**BE THE**  
**BOSS**  
OVER CANCER

2020

**PARTNERSHIP**  
**OPPORTUNITIES**

# Cancer and Careers Sponsorship

## AN IMPACT TO BE PROUD OF

- Supports all of Cancer and Careers' vital programs
- Ensures every publication, event, scholarship and one-on-one service is offered free of charge, nationwide
- Sends the message that your company is at the forefront of addressing the challenges of cancer

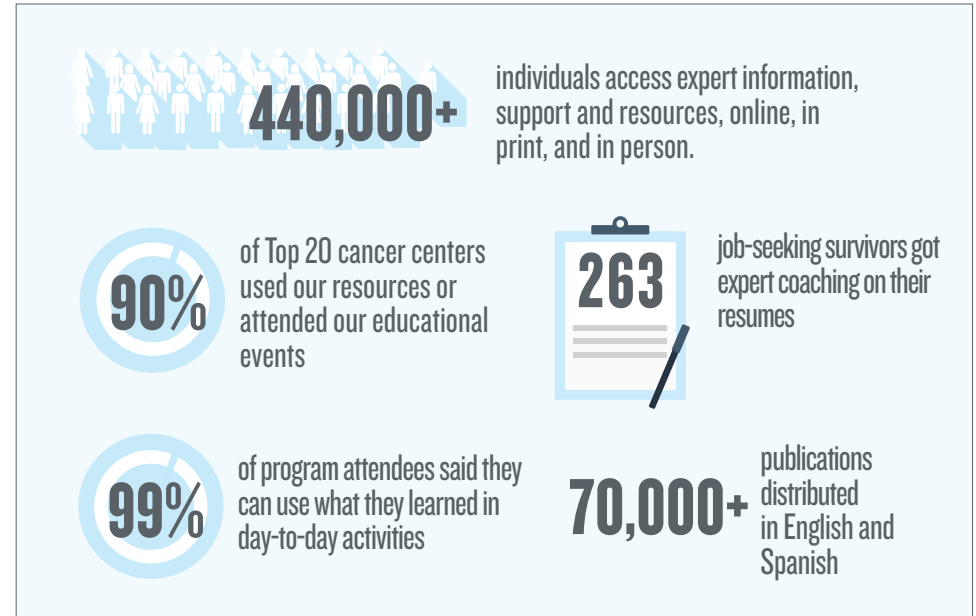
## YOUR BRAND FRONT AND CENTER

- Receive year-round visibility and recognition to hundreds of thousands across the nation, including cancer survivors and their advocates who appreciate the importance of corporate generosity

## CONNECTIONS THAT COUNT

- Priority visibility, networking and access to leaders in the beauty, pharmaceutical and related industries via CEW's membership and CEW/CEWF Board of Directors

## SELECT 2019 REACH & IMPACT



“ I know of no other organization that provides the kind of **sensitive and professional guidance** I have found at Cancer and Careers. ”

-Cancer Survivor

SPONSOR

**VISIBILITY 770,000+**  
IMPRESSIONS

# Cancer and Careers Sponsorship

## LEVELS AND BENEFITS

### YEAR-ROUND VISIBILITY

- On Cancerandcareers.org, e-blasts, printed materials, signage at Cancer and Careers' annual Conference on Work & Cancer, and more.

• **Potential Sponsor Reach: 770,000+ impressions**

### AT THE BEAUTY OF GIVING LUNCHEON

- Recognition in printed program, AV presentation, and verbal remarks at Beauty of Giving Luncheon

- If attending, guests invited to VIP reception and offered preferred seating

- Guest(s) invited to sit on Dais

### EMPLOYEE AND PROMOTIONAL BENEFITS

- Right to use CAC logo to promote partnership and access to all CAC educational content, with approval

- Engagement opportunities with employees and customers to be mutually determined with Cancer and Careers

Platinum \$50,000

Gold \$25,000

Silver \$10,000



Premium



Priority



Prominent



Premium



Priority



Prominent



2



1



1

1



# Contact Us

For more information about these partnership opportunities and other ways to get involved.

Thank you!

LETICIA M. BENNETT

Director of Development

CEW Foundation/Cancer and Careers

159 West 25th Street, 8th Floor, New York, NY 10001

[lbennett@cew.org](mailto:lbennett@cew.org)

646-929-8044